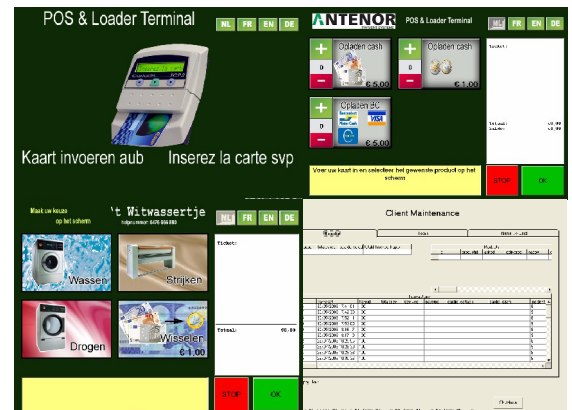




APS: ANTENOR PAYMENT SYSTEM SW

- Generic graphical user interface for payment transactions with multi language support.
- Applicable in self-service or attended mode
- Supports Cash based and Cashless payment
- Smooth interworking with Antenor S-series, including IO control.
- Enhanced reporting with SQL-database and web-interface support.



Applications.

APS is a windows PC based application designed to support a variety of payment transactions in self-service as well as in operator assisted applications.

In combination with the Antenor S-series system payment automats, the APS SW provides an intuitive graphical user interface to guide a customer in self-service through an effective sales or recharge cycle.

The APS SW also proves to be a valuable tool for attended operations in private payment projects where payment or recharging needs to be performed at a reception desk.

Graphical user interface with multi language support.

The APS provides an intuitive graphical user interface and supports multiple languages. Different product types can be defined for single- or multi-vend, recharging with cash or cashless, ... Several products (2, 4, 8) can be grouped on a single screen, each product with its own jpg picture.

Most products have a fixed unit price, for attended applications however a variable price can be entered by the operator.

A payment transaction typically involves three phases: product selection with confirmation, payment phase and delivery phase.

A ticket picture gives the overview of the order and can optionally be printed out at the end of the transaction.

Modular Payment Options

The APS supports certified DLL's for Banksys CZAM-V and CZAM-SPIN for unattended transactions and CZAM-XENTA for attended transactions.

APS can interwork with Cartadis TCP2 terminals through a proven DLL to recharge or debit e-purses.

The APS supports VABP for flexible cash payment through the Antenor S000 System Payment Controller.

Detailed logging and enhanced reporting.

Every transaction is logged in an SQL-database with all its details including time-stamp, badge-number, identifier of transaction, product mix sold, amount paid in cash, e-purse or with bankcard, saldo on the e-purse, ...

The operator can view the logs and obtain comprehensive reports on the screen or on a print-out. As an alternative the database and report can be exported on a memory stick or viewed via the LAN-interface using a standard web browser.